

REV	DESCRIPTION	DATE	IDRN
B	APPROVED	08/02/2017	G. NOALL
A	DRAWN	12/12/2016	R. BUNN

NOTES

RESPONSIBILITY OF THE USER OF THIS TRAFFIC MANAGEMENT PLAN DIAGRAM TO CONFIRM THE APPROPRIATENESS OR OTHERWISE FOR THE INTENDED WORK SITE BASED ON THE REQUIREMENTS OF AS1742 AND VICROADS WORKING WITHIN THE ROAD RESERVE GUIDELINES.

ALL RESPONSIBILITY WILL REMAIN WITH THE USER TO ENSURE COMPLIANCE WITH RELEVANT REGULATIONS AND TO MAINTAIN AN APPROPRIATE LEVEL OF PROTECTION FOR WORK RESPONSIBLE, THE USER MUST READ THE CURRENT PLAN.

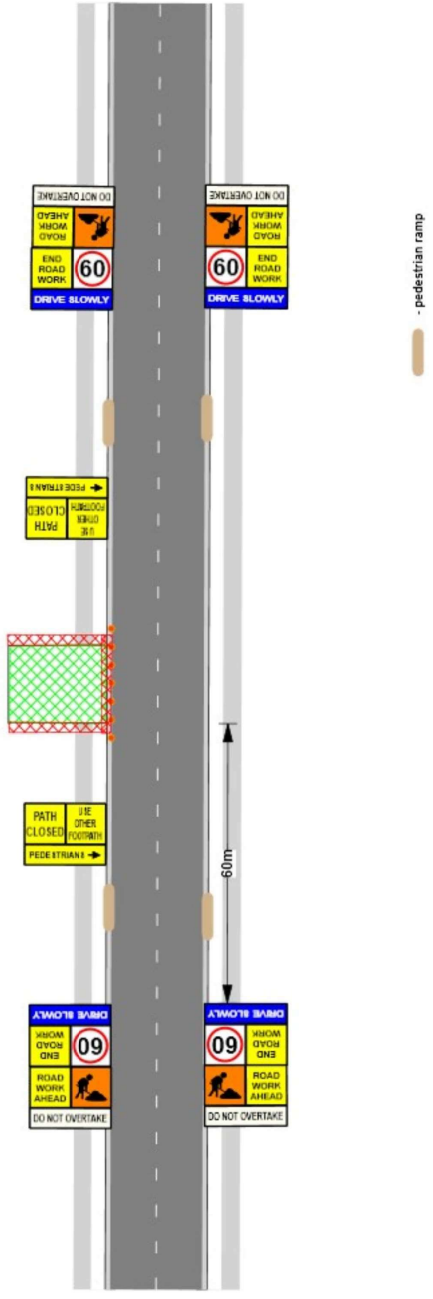
SCALE

NOT TO SCALE

Alpine Shire Council  
 2 Churchill Avenue  
 Bright, VIC 3741  
 (03) 5755 0555  
 info@alpine.vic.gov.au  
 ABRN: 741 921 370 251

DRAWING No.	ASC-TMP-4
SHEET No.	1 OF 1
ORIGINAL SHEET	
REVISION	
DATE	13/12/2016
DRAWN	N/A
CHECKED	G. NOALL
DESIGN	R. BUNN

ALPINE SHIRE COUNCIL  
 Standard Traffic Management Plans  
 Driveway Installation (60km speed zone, with footpath)



- pedestrian ramp