

# Community update

Bogong High Plains  
Road Landslip





## Major Road Projects Victoria (MRPV)

- Who is MRPV?
- Our construction partner  
Whelans Group Investment
- Objective
  - Progress update
  - Interim solution
  - Long term solution





**October 2022**



**December 2022**

OFFICIAL





**January 2023**

OFFICIAL

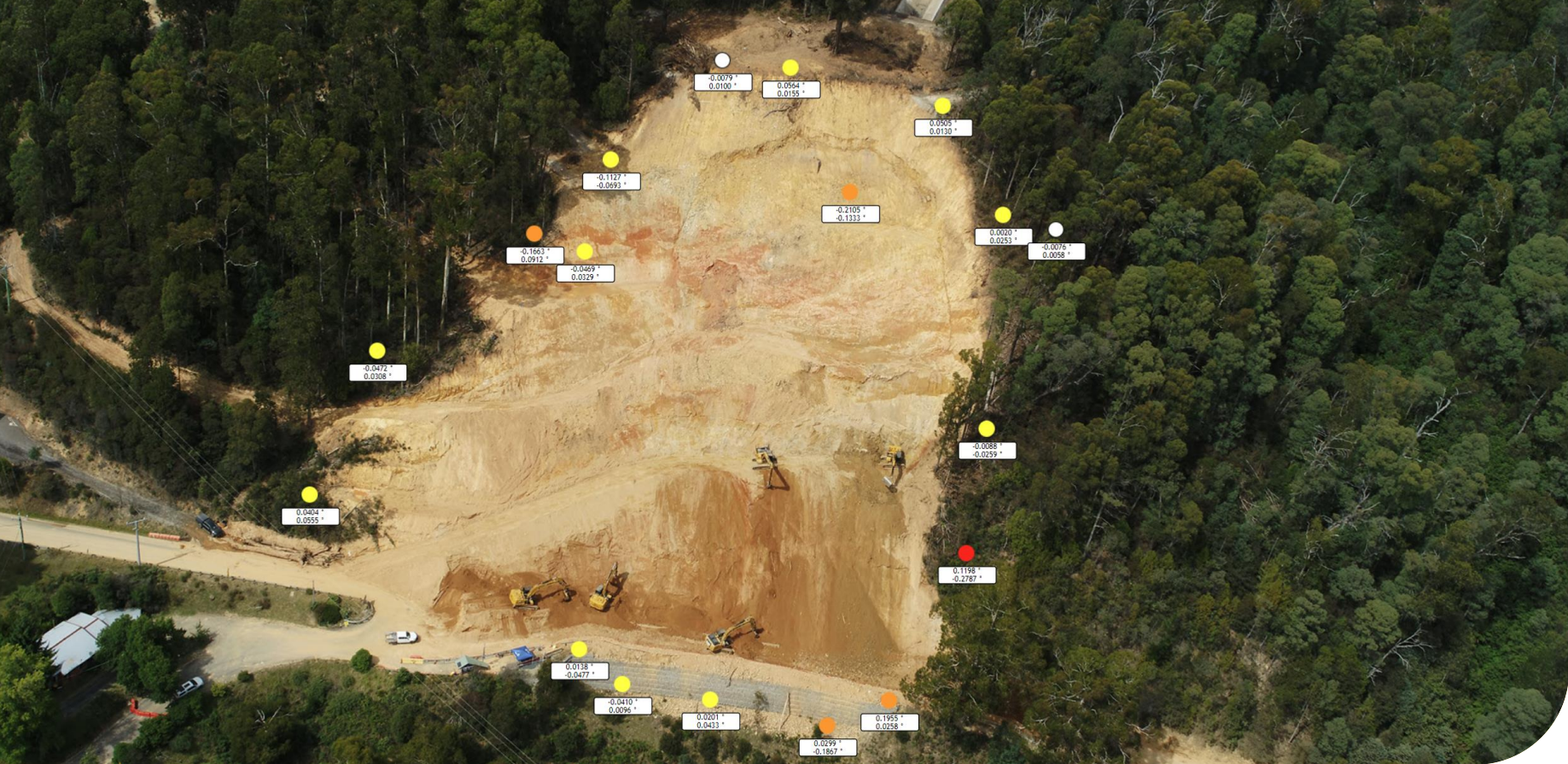




**February 2023**

OFFICIAL





February 2023

OFFICIAL



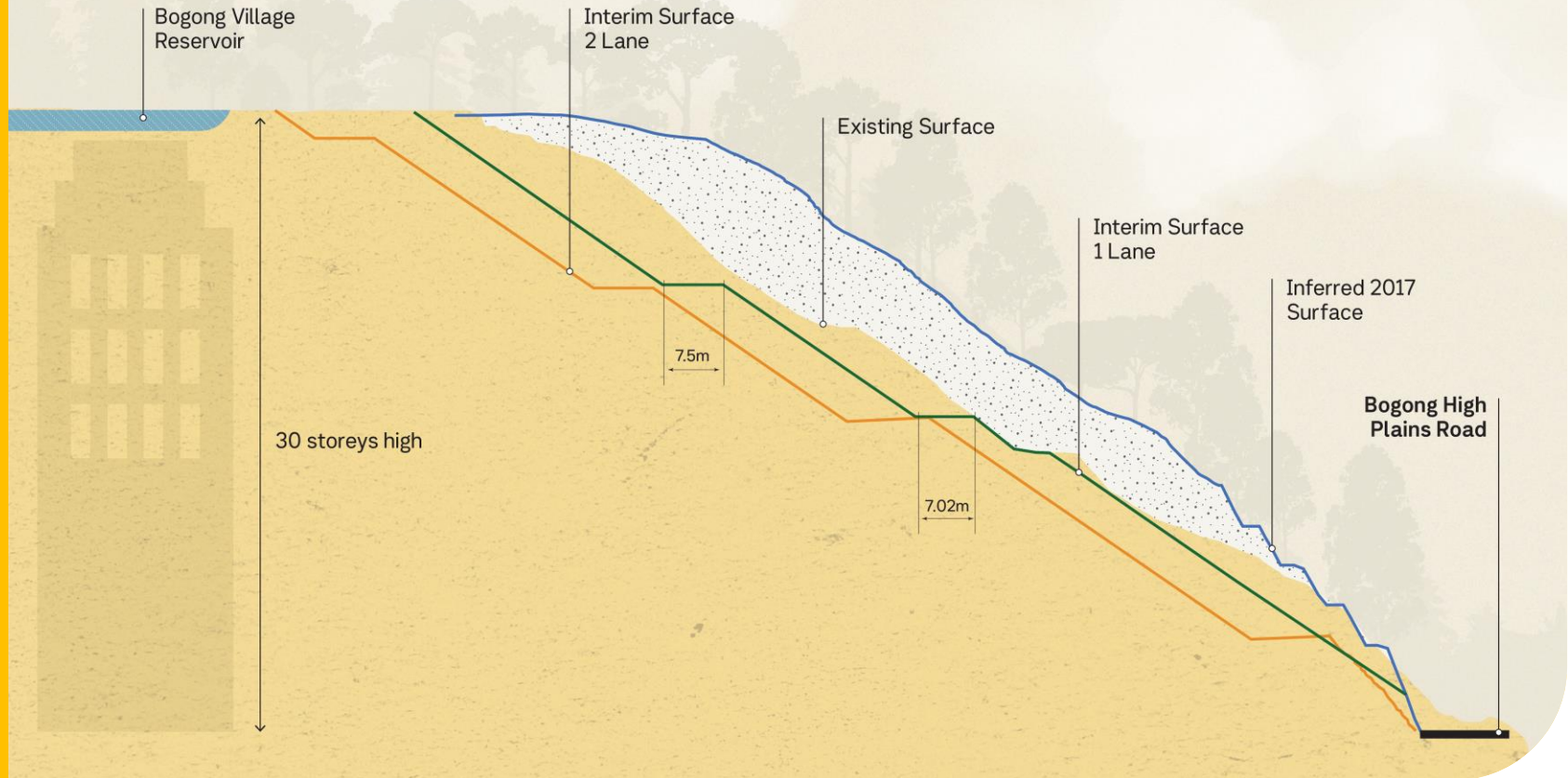


**February 2023**

OFFICIAL

# Bogong High Plains Road

Landslip cross-section



OFFICIAL





OFFICIAL

## Timeline

- 25 April 2023 – Bogong High Plains Road, single lane reopens pending favourable weather and ground conditions
- TBC – Dual lane access restored
- Ongoing - Planning and works continue on long term solution
- TBC - Long term rectification complete (minimal impact to traffic)



## Communications and Engagement

- Weekly updates – video, web and email
- Face to face/online engagement
- Community Pop up and information sessions
- Progress photography



# Department of Transport and Planning

4WD Emergency Access Track



OFFICIAL

# 4WD Emergency Access Track

## Current access arrangements

- The track is available for use by emergency services, essential services and Falls Creek residents / businesses.
- A permit is required to access the track.
- There are several conditions for vehicles using the track, including:
  - All vehicles must be 4WD with high ground clearance. AWD are currently not permitted on the track
  - All vehicles must have a fitted or portable UHF radio on channel 40 when using the track
  - Drivers must be competent driving 4WD
  - Trailers are not permitted
- The track is currently open every day:
  - between 6am and 8:30am
  - between 4:30pm and 7pm





# 4WD Emergency Access Track

## Track upgrade progress

Since opening the track in December 2022 we have:

- Removed trees and vegetation
- Widened sections of the track
- Improved the surface of the track and drainage
- Installed safety barriers

## Next steps:

Further upgrades to be completed over coming weeks:

- Installation of waterproof pavement seal
- Installation of signage

Following completion of these upgrades we anticipate the track will be available for broader use, including:

- Both 4WD and AWD vehicles will be permitted, subject to suitable ground clearance and mass restrictions.
- Extended opening hours of the track

